

Pinellas County Schools Transportation

EXECUTIVE SUMMARY

Section 1006.23 Hazardous Walking Conditions Determination
Revisions 2016

Background

Chapter 2015-101, Laws of Florida, made revisions to the criteria used to determine a hazardous walking condition and to the procedures for identification and inspection of the perceived hazardous location.

Section 1011.68(1)(e), Florida Statutes (F.S.). Authorizes funding for elementary school students who live less than two miles from their assigned school when subjected to hazardous walking conditions described in section 1006.23(2), F.S.

Background (cont'd)

Two eligibility criteria

1. Grade level and type of school – Elementary school up to grade 6
2. The condition of the walking route between home and the assigned school – criteria includes – traffic counts, speed limits, presence of traffic control devices, number of traffic lanes students must cross and the nature of the walking surface and its distance from the road.

Parallel to Roadway - F.S. 1006.23(2)(a)

2015	Revision 2016
Area must be at least 4 feet wide adjacent to roadway including drainage ditches, sluiceways, swales and channels	Excludes drainage ditches, sluiceways, swales and channels
Posted speed limit 55mph or greater	Posted speed limit 50mph or greater

Perpendicular to Roadway - F.S. 1006.23(2)(c)

2015	Revision 2016
Posted speed limit of 50mph or greater	Posted speed limit of 50mph or greater or Six lanes or more , not including turn lanes, regardless of speed limit

Review Process changes

2015	2016
<p>Review done by:</p> <ul style="list-style-type: none">• School district staff• Crossing Guard Supervisors• Representative from municipality• Pinellas County representative for parallel hazards – 4 foot walk setback minimum of 3 feet @ 55mph or greater	<p>Review done by:</p> <ul style="list-style-type: none">• The school district;• State or local government with jurisdiction over the road;• Municipal police department for a municipal road, the sheriff's office for a county road or the Department of Transportation for a state road; and• The metropolitan planning organization, if the jurisdiction is within an area for which one exists.

Review Process Changes (cont'd)

2015	Revision 2016
<ul style="list-style-type: none">No further action once reviewed	<ul style="list-style-type: none">PCS request position statement from roadway jurisdiction to resolve hazard condition and estimated resolution date.
	<ul style="list-style-type: none">Roadway jurisdiction must report to district superintendent correction status and date within 90 days receipt of request

Review dates

- March – April annually
- Agency staff will schedule meetings to:
 - Review each school within 2 mi boundary
 - Review student counts within 2 mi
 - Review traffic counts
 - Review hazardous conditions
 - Review posted speed limits
 - Complete all necessary documentation

Summary of Review

2015	2016
49 Declared Hazard locations	39 Declared Hazard locations <ul style="list-style-type: none">• Reduction in FEFP funding
372 Unfunded transported students Cost of \$130,200	836 unfunded student <ul style="list-style-type: none">• Cost of \$292,600• Additional cost of \$162,400

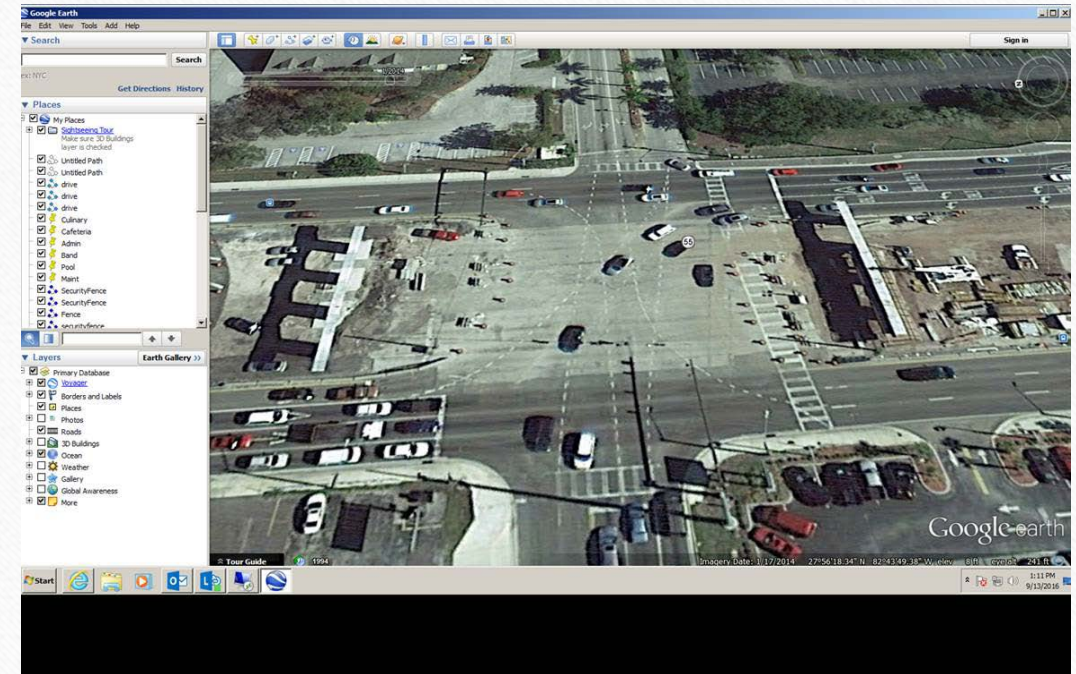
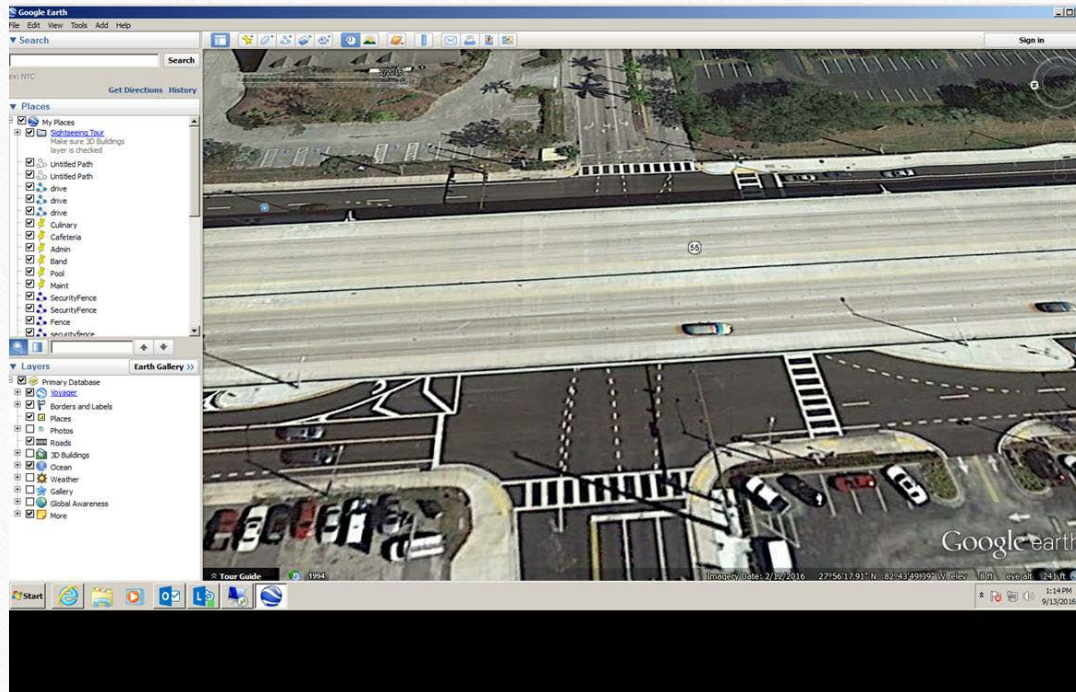
The number of declared hazard locations declined due to:

- Completion of road improvements on US 19
- Completion of road improvements on Ulmerton Rd

Summary of Review 2016

Intersection 2016 – Belleair Rd & US 19

Intersection 2014 – Belleair Rd & US 19



Summary of Review 2016

Intersection Bellair Rd & US 19 N - 2016



Process pending

- Board Workshop
- Final meeting with all agencies to review final list of hazard locations
- District superintendent/designee send request for position statement to hazard roadway jurisdiction
- Roadway jurisdiction respond to request to superintendent/designee